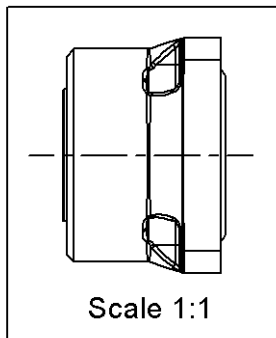
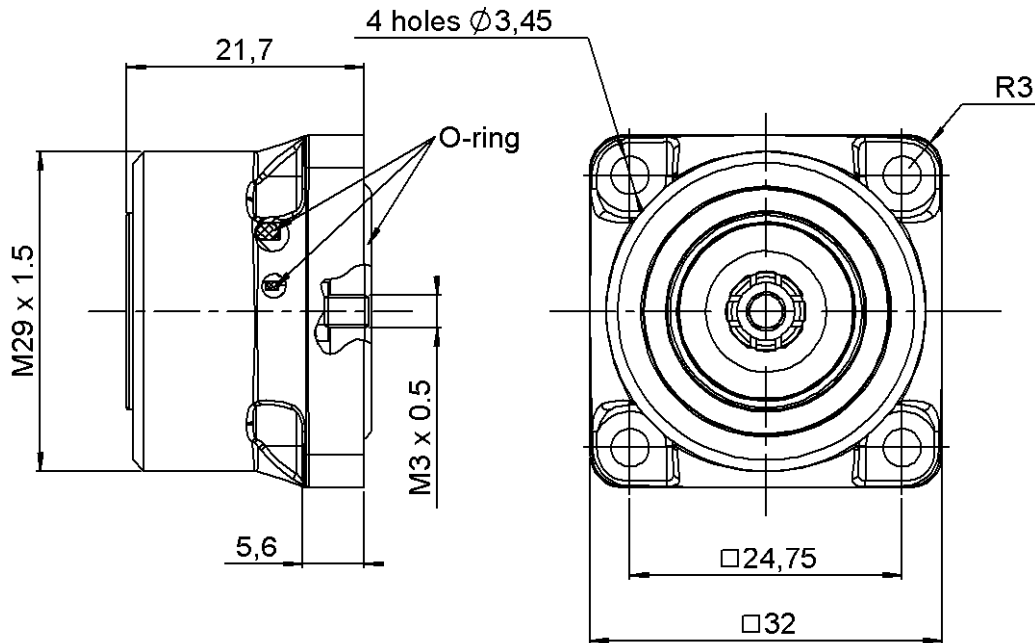


COMPOSITE SQUARE FLANGE JACK RECEPTACLE-PANEL SEAL

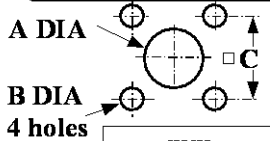
R187.403.100

WATERPROOF INTERFACE-FRONT MOUNTING M3 S CREW

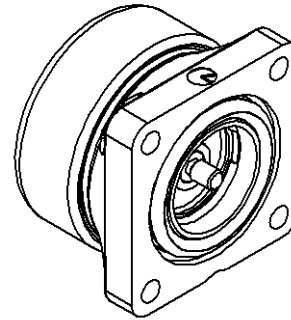
S : 7/16 COMPOSITE



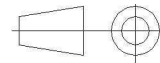
PANEL CUT OUT



	mm	
	Maxi	mini
A	16.2	16
B	3.7	3.6
C	24.8	24.7



All dimensions are in mm.



COMPONENTS	MATERIALS	PLATING (µm)
BODY	COMPOSITE MATERIAL - BLACK	-
CENTER CONTACT	BRONZE	SILVER 5 OVER COPPER 0.5
OUTER CONTACT	BRASS	SILVER 3 OVER BBR 0.5
INSULATOR	PTFE	-
GASKET	SILICONE RUBBER	-
OTHERS PARTS	-	-
-	-	-
-	-	-

Issue : 0834 B

In the effort to improve our products, we reserve the right to make changes judged to be necessary.



COMPOSITE SQUARE FLANGE JACK RECEPTACLE-PANEL SEAL

R187.403.100

WATERPROOF INTERFACE-FRONT MOUNTING M3 S CREW

S : 7/16 COMPOSITE

PACKAGING

SPECIFICATION

Standard	Unit	Other
20	'W' option	Contact us

ELECTRICAL CHARACTERISTICS

ENVIRONMENTAL

Impedance **50** Ω
 Frequency **0-7.5** GHz
 VSWR ***1.06 + 0,0000** x F(GHz) Maxi
 Insertion loss **0.05** √F(GHz) dB Maxi
 RF leakage - (**NA** - F(GHz)) dB Maxi
 Voltage rating **1400** Veff Maxi
 Dielectric withstanding voltage **2700** Veff mini
 Insulation resistance **10000** MΩ mini

Operating temperature **-40/+85** ° C
 Hermetic seal **NA** Atm.cm3/s
 Panel leakage **IP67**

OTHER CHARACTERISTICS

Assembly instruction

Others :

*vswr : 1.06 between DC to 3 GHz
 *vswr : 1.10 between 3 to 7.5 GHz
 PIM3:-125 dBm under 2 carriers of +43dBm

Flammability rating : UL94-V0
 UV resistance : IEC 68-2-5 (1000h@1250W/m²)

MECHANICAL CHARACTERISTICS

Center contact retention
 Axial force – Mating end **200** N mini
 Axial force – Opposite end **NA** N mini
 Torque **NA** N.cm mini

Recommended torque
 Mating **NA** N.cm
 Panel nut **NA** N.cm

Mating life **500** Cycles mini
 Weight **24,5000** g

Issue : 0834 B

In the effort to improve our products, we reserve the right to make changes judged to be necessary.

